



Countywide Policies

Review Draft: November 2020



CLARION

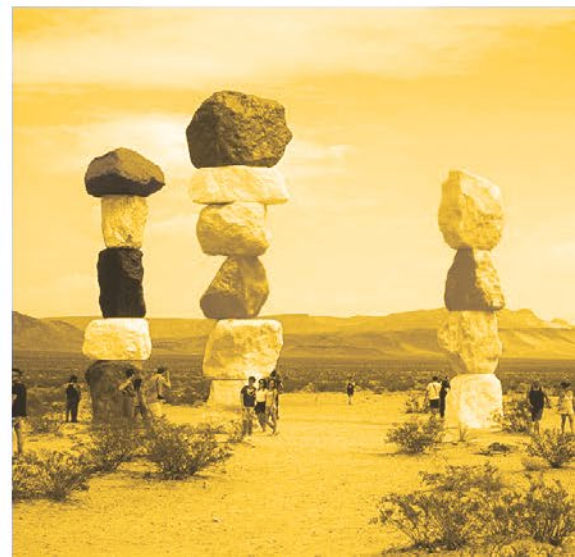


TABLE OF CONTENTS

About the Countywide Policies.....	4
Core Values	4
Relationship to NRS Requirements.....	5
Parts of the Plan	8
Relationship to the County’s Sustainability and Climate Action Plan	9
Core Value #1: Unique Communities, Neighborhoods, and Lifestyles.....	12
WHERE ARE WE TODAY?	12
IN 2050, CLARK COUNTY IS A PLACE WHERE... ..	12
COUNTYWIDE GOALS AND POLICIES	13
Goal 1.1: Provide opportunities for diverse housing options to meet the needs of residents of all ages, income levels, and abilities	13
Goal 1.2: Expand the number of long-term affordable housing units available in Clark County	14
Goal 1.3: Encourage the development of new neighborhoods that embody Clark County’s core values	15
Goal 1.4: Invest in and care for established neighborhoods	15
Goal 1.5: Maintain opportunities for rural lifestyles within the Las Vegas Valley	16
Goal 1.6: Protect the character, identity, and economic viability of the County’s outlying communities	17
Goal 1.7: Protect Clark County’s historic, cultural, and archaeological resources	17
HOW DO WE GET THERE?	19
Core Value #2: Equitable Access to Programs, Services, and Amenities.....	21
WHERE ARE WE TODAY?	21
IN 2050, CLARK COUNTY IS A PLACE WHERE... ..	21
COUNTYWIDE GOALS AND POLICIES	22
Goal 2.1: Continue to expand the County’s parks, trails, and open space system at a level that is sustainable	22
Goal 2.2: All residents in Clark County have access to high-quality programs and amenities	23
Goal 2.3: All Clark County residents have access to the high-quality health and social services they need	24
Goal 2.4: Continue to foster a supportive environment for local arts, culture, and entertainment	25
HOW DO WE GET THERE?	26
Core Value #3: A Healthy and Sustainable Natural and Built Environment	28
WHERE ARE WE TODAY?	28
IN 2050, CLARK COUNTY IS A PLACE WHERE... ..	28
COUNTYWIDE GOALS AND POLICIES	29
Goal 3.1: Maintain air quality at a level that protects public health and improves visual clarity	29
Goal 3.2: Support County and state efforts to expand the use of clean energy and achieve GHG reduction targets	29
Goal 3.4: Reduce quantities of landfilled waste, potentially extending the operational life of current landfill sites within Clark County	31
Goal 3.5: Manage access to public lands to balance habitat, recreational, environmental, aesthetic, and economic value	32
Goal 3.6: Focus on incorporating enhanced sustainability and resilience practices into the built environment	33
HOW DO WE GET THERE?	34
Core Value #4: A More Connected Clark County.....	36
WHERE ARE WE TODAY?	36
IN 2050, CLARK COUNTY IS A PLACE WHERE... ..	36
COUNTYWIDE GOALS AND POLICIES	37

Goal 4.1: Promote the expansion and use of multimodal transportation options throughout Clark County	37
Goal 4.2: Actively manage the transportation system to improve reliability, efficiency, and safety	39
Goal 4.3: Support regional and interagency collaboration	40
Goal 4.4: Foster a culture of transparent and inclusive County government	40
HOW DO WE GET THERE?	42
Core Value #5: A Diverse and Resilient Economy	44
WHERE ARE WE TODAY?	44
IN 2050, CLARK COUNTY IS A PLACE WHERE... ..	44
COUNTYWIDE GOALS AND POLICIES	45
Goal 5.1: Promote diversification of the economic base to enhance resilience	45
Goal 5.2: Support continued improvements to and expansion of commercial airport operations in Clark County	46
Goal 5.3: Support the military and the need for well-trained and prepared armed forces	46
Goal 5.4: Support development of educational programs that prepare the workforce with the knowledge and skills to succeed	47
Goal 5.5: Foster a business-friendly environment	47
HOW DO WE GET THERE?	48
Core Value #6: Sustainable and Resilient Growth and Development	50
WHERE ARE WE TODAY?	50
IN 2050, CLARK COUNTY IS A PLACE WHERE... ..	50
COUNTYWIDE GOALS AND POLICIES	51
Goal 6.1: A coordinated pattern of development in unincorporated Clark County	51
Goal 6.2: Enhance the quality of development in unincorporated Clark County	52
Goal 6.3: Proactively plan for safer and more resilient infrastructure, development patterns, and County operations	52
Goal 6.4: Collaborate with service providers and adjacent jurisdictions in the provision of adequate public facilities	53
HOW DO WE GET THERE?	55

About the Countywide Policies

This document builds upon the preliminary [Plan Framework](#) for the Master Plan that was released in September 2020. As discussed in the Plan Framework, it represents a shift away from the current topical or “element-based” Master Plan structure that Clark County has had in place for many years. This approach is intended to help make the Master Plan more user-friendly and accessible to all users, and to convey a cohesive vision more clearly for the County. Draft countywide policies were developed based on:

- Existing Master Plan Elements;
- Related plans and studies—both internal to Clark County, and those developed by outside agencies and partners; and
- Feedback received from stakeholders and the community to-date.

Many of the policies reflect the current practices of Clark County and its partnerships with others at the regional, state, and federal level. Other policies are new. Footnotes are used throughout the document to help orient the reader to the origins different goals and policies, and to highlight notable changes from the preliminary Plan Framework document.

This is a working document. These policies will continue to be refined over the coming months as other components of the Master Plan are being developed. Placeholders for the many graphics, map diagrams, images, and other supporting information that will be incorporated as part of the draft Master Plan are noted throughout.

Core Values¹

A key focus for the Master Plan rewrite is to establish goals and policies that will set Clark County on a more sustainable and resilient path for the future. Achieving this will require us to strive to maintain certain aspects of Clark County that the community values today, while recognizing that we will need to adapt in the face of a certain amount of growth and change over the next ten to twenty years and beyond. Our ability to adapt successfully will require a continual focus on—and balance between—six core values:

- Unique communities, neighborhoods, and lifestyles
- Equitable access to programs, services, and amenities
- A healthy and sustainable natural and built environment
- A more connected Clark County
- A diverse and resilient economy
- Sustainable and resilient growth and development

¹ Some adjustments to the wording of the core values were made in response to input received. Refer to footnotes in the individual sections that follow for additional detail.

Because the core values are closely interrelated, they are intended to be viewed as being equal in weight and are not listed in any particular order of importance. This foundation encourages systems thinking to recognize and emphasize the interrelationships among all aspects of the community's vision. A systems thinking perspective recognizes the interdependent economic, social, and environmental implications of policies, decisions, and outcomes, and recognizes the benefits and trade-offs across these topic areas.

Relationship to NRS Requirements

In counties with a population greater than 700,000 residents, NRS §278.160 requires the Master Plan to include eight topical elements along with a number of sub-elements. The graphic on the following pages illustrates the relationship between each of the six core values and the policy topics they encompass compared to the required NRS elements and sub-elements.



Core Value #1:

**Unique Communities,
Neighborhoods, and
Lifestyles**



Core Value #2:

**Equitable Access to
Programs, Services, and
Amenities**



Core Value #3:

**A Healthy and
Sustainable Natural
and Built Environment**

TOPICS ADDRESSED

- | | | |
|--|---|--|
| <ul style="list-style-type: none">• Housing options/affordability• Complete neighborhoods (design of new neighborhoods)• Established neighborhoods• Outlying communities• Rural neighborhoods• Historic, cultural, and archaeological resources | <ul style="list-style-type: none">• Parks, trails, and open space• Recreational, educational, and enrichment programs• Health and human services• Arts and culture | <ul style="list-style-type: none">• Air quality• Clean energy• Water supply, quality, and conservation• Waste reduction• Natural areas• Built environment |
|--|---|--|

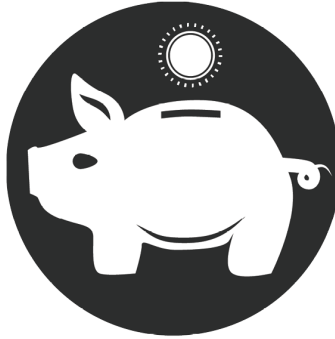
RELATIONSHIP TO NRS REQUIREMENTS

- | | | |
|--|---|---|
| <ul style="list-style-type: none">• Housing• Historic preservation• Land use (community design and development, master planned communities, rural neighborhoods preservation plan)• Federal lands | <ul style="list-style-type: none">• Recreation and open space• Federal lands | <ul style="list-style-type: none">• Conservation• Energy• Federal lands |
|--|---|---|



Core Value #4:

**A More Connected
Clark County**



Core Value #5:

**A Diverse and
Resilient Economy**



Core Value #6:

**Sustainable and
Resilient Growth and
Development**

TOPICS ADDRESSED

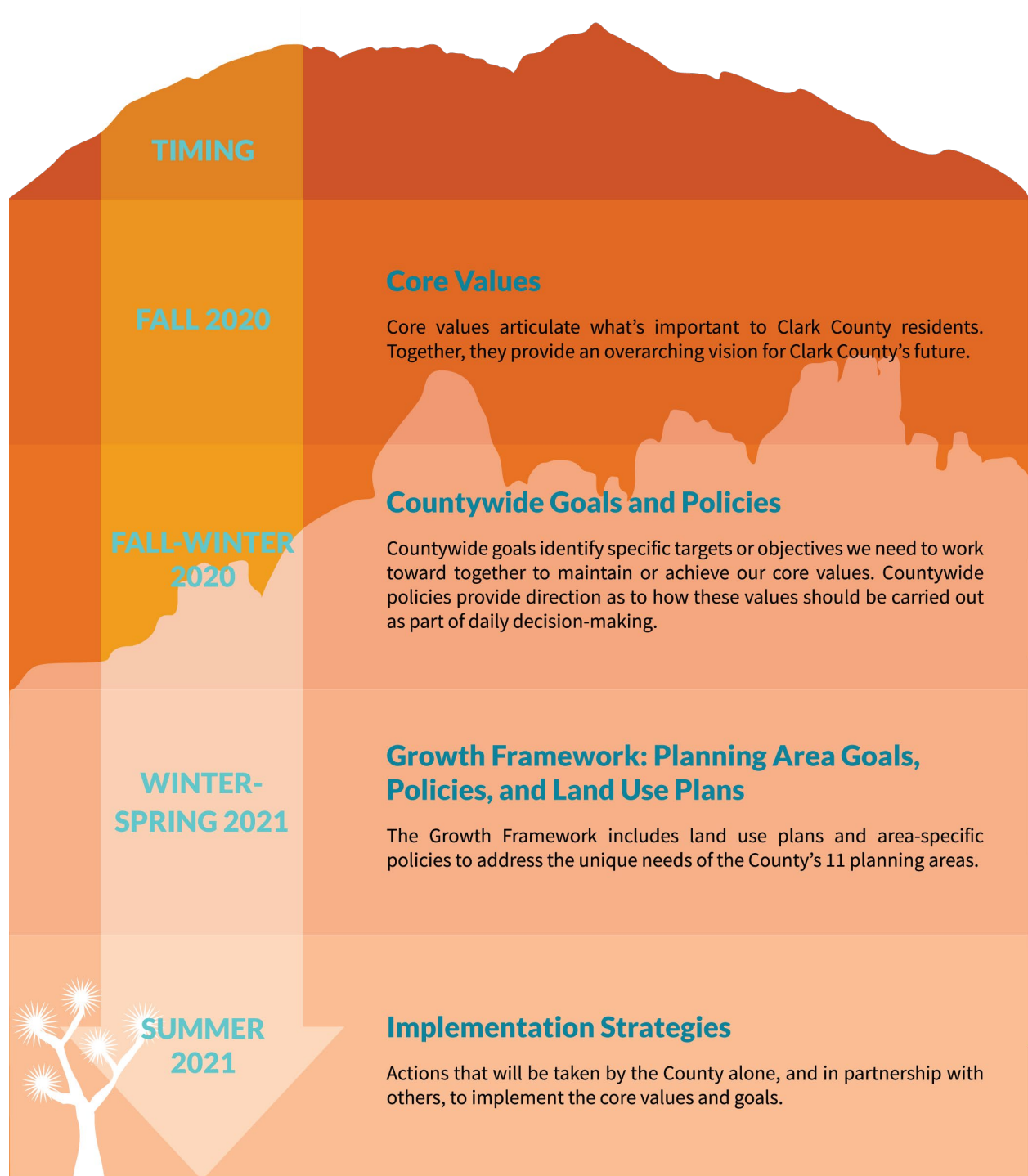
- | | | |
|---|---|---|
| <ul style="list-style-type: none">• Multimodal transportation• Regional collaboration• Transparent and inclusive government | <ul style="list-style-type: none">• Employment and job base• Education/workforce• Business-friendly environment | <ul style="list-style-type: none">• Growth management• Alignment with adopted plans• Development quality• Hazard mitigation• Public safety• Adequate public facilities |
|---|---|---|

RELATIONSHIP TO NRS REQUIREMENTS

- | | | |
|--|---|--|
| <ul style="list-style-type: none">• Transportation | <ul style="list-style-type: none">• Public Facilities and Services (economic and schools sub-elements)• Federal Lands• Land Use | <ul style="list-style-type: none">• Land Use• Federal Lands• Transportation• Public Facilities and Services (utilities/aboveground utility plan sub-elements, schools sub-element)• Safety (fire, police, and natural & man-made hazards sub-elements) |
|--|---|--|

Parts of the Plan

The graphic below illustrates the role of each layer of policy guidance in the Master Plan, and the general timing of each.



Relationship to the County's Sustainability and Climate Action Plan

Many participants in the Transform Clark County process have voiced their concerns about the effects of climate change on Clark County and have expressed a desire for stronger policy direction in the Master Plan on this issue. Earlier this fall, Clark County's department of Sustainability and Environment launched **All-In Clark County**.

All-In Clark County is focused on taking action to address climate change and create a more sustainable future for all. The plan will take a smart, bold, and inclusive approach to creating a sustainable community for the well-being and prosperity of all, today and into the future. All-In will first assess opportunities within County Operations to lead by example for a community-wide plan that will launch in Summer 2021. All-In will build on the values identified in Transform and take further steps to ensure the long-term sustainability of Clark County.

The Transform Clark County team is working closely with the All-In team to ensure the two efforts are aligned. The infographic on the following page highlights key linkages between the two efforts.

For more information: www.allinclarkcounty.org







CORE VALUE #1

**Unique Communities,
Neighborhoods, and
Lifestyles**

Core Value #1: Unique Communities, Neighborhoods, and Lifestyles

Where are we today?

Clark County is made up of many unique neighborhoods and communities, and residents place a high value on protecting this diversity. The County offers a wide range of lifestyles, from “big city” urbanized areas to sparsely populated rural expanses, plus everything in between. Residents wish to maintain this wide array of choices in lifestyle without losing sight of common goals that apply to the County as a whole.

Diverse neighborhoods and communities require diverse goals. In some older, established areas, residents would like to see the existing neighborhood fabric and character preserved. Other areas are ripe for reinvestment and revitalization. Rural areas on the fringe of the Las Vegas Valley are concerned about expanding development, and in addition to protection of lower density areas, would like to see an emphasis on transition areas between higher and lower density neighborhoods. Outlying communities would like to maintain their distinction from the Las Vegas Valley. Residents would also like to have a higher bar set for new neighborhoods in unincorporated Clark County.

Whatever the character of an area and the goals that are appropriate to it, the overarching objective of maintaining affordability unites them all. Residents recognize that a greater diversity of housing types would help to achieve this, and they are clear that there are areas where mixing single-family homes with apartments, duplexes and other kinds of units would be welcome development. Similarly, many would like to see more mixed-use centers and neighborhoods where various housing types and shops, restaurants, and services exist side-by-side.

In 2050, Clark County is a place where...

- Rural areas continue to thrive alongside urban ones, and areas of different character blend from one into another with logical transitions between them
- There are many choices about the kind of place we call home, and the existence of those choices helps assure that home is a place affordable to all
- A family-friendly atmosphere thrives alongside many lifestyle options to accommodate the diverse population

Countywide Goals and Policies

Goal 1.1: Provide opportunities for diverse housing options to meet the needs of residents of all ages, income levels, and abilities²

POLICY 1.1.1: MIX OF HOUSING TYPES

Encourage the provision of diverse housing types at varied densities and in numerous locations. In particular, seek opportunities to expand “middle” housing options that are less prevalent in unincorporated parts of Clark County, such as duplexes, townhomes, three- and four-plexes, and smaller multifamily complexes.

[IMAGES that illustrate different kinds of housing beyond single-family dwelling developments]

POLICY 1.1.2: HOUSING ACCESS

Concentrate higher-density housing in areas with access to existing or planned high-frequency transit, major employment centers, and other services.

POLICY 1.1.3: MULTI-GENERATIONAL HOUSING

Support the integration of detached or attached accessory dwelling units (ADUs) as part of new development and/or in established neighborhoods to support aging-in-place and expand the supply of smaller dwelling units. *[See also, Policy 1.4.4]*

POLICY 1.1.4: SUPPORTIVE HOUSING

Encourage housing options that incorporate universal design and visitability³ principles to facilitate aging-in-place, and accommodation of older residents and others with mobility limitations or disabilities.

POLICY 1.1.5: HOUSING FOR VULNERABLE POPULATIONS⁴

Collaborate with local and regional partners on development of programs and resources to prevent residents from becoming homeless, and facilitate the provision of expanded housing for vulnerable populations, including the elderly and those transitioning away from homelessness. *[See also, Goal 2.3 and supporting policies]*

² This goal and policies 1-4 in this section build upon concepts addressed in the County’s current Housing Element, adopted in 2019.

³ Visitability is a movement that seeks to increase the supply of accessible housing through the inclusion of three basic structural features at the time of home construction: a zero-step entrance, wide doorways, and at least a half bath on the main floor of the home.

⁴ This policy builds from Commissioners’ direction to staff regarding this topic, as described on the County’s Affordable Housing web page.

Goal 1.2: Expand the number of long-term affordable housing units available in Clark County⁵

POLICY 1.2.1: EXISTING AFFORDABLE UNITS

Maintain the supply of long-term affordable housing (restricted for 20-50 years) by focusing efforts on rehabilitation and preservation of existing affordable units particularly in areas where redevelopment pressure exists or is likely to occur in the future.

POLICY 1.2.2 FINANCIAL SUPPORT

Support programs that use state, federal, and local housing program funds to preserve existing affordable housing and provide financial assistance to lower income homeowners to maintain their properties in adequate condition.

POLICY 1.2.3: NON-PROFIT OWNERSHIP

Encourage acquisition of housing by non-profit organizations, land trusts, or tenants as a strategy to protect housing from upward pressure on prices and rents.

POLICY 1.2.4: REGULATORY TOOLS

Investigate the feasibility of implementing regulatory requirements (e.g., inclusionary zoning), targeted incentives, and development agreements to promote expanded construction of affordable housing units throughout the County.

POLICY 1.2.5: DISPOSAL LAND⁶

Support the implementation of affordable housing development plans on former Bureau of Land Management (BLM) lands designated for the development of affordable housing. *[See also, Goal 6.5 and related policies]*

POLICY 1.2.6: NEW AFFORDABLE UNITS

Continue to work with community and regional partners to evaluate the feasibility of and pursue a variety of strategies that will expand the number of affordable units, such as, but not limited to activity bonds, housing trust funds, land banks or land trusts, and fee-in-lieu programs.

⁵ Policies 1-4 are adapted from concepts from the County's current Housing Element, adopted 2019. This section also draws from information provided in the 2020 Community Resources Management Program Guide.

⁶ Policies 1.2.5 and 1.2.6 are derived from actions the Commissioners have proposed or adopted, as described on the County's Affordable Housing web page.

Goal 1.3: Encourage the development of new neighborhoods that embody Clark County's core values

POLICY 1.3.1: NEIGHBORHOOD IDENTITY⁷

Encourage the integration of varied housing models, architectural styles, streetscapes, signage, common landscaped areas, and other character-defining features that contribute to a distinct neighborhood identity.

[IMAGES of different County neighborhoods]

POLICY 1.3.2: MIX OF HOUSING OPTIONS WITHIN NEIGHBORHOODS

Encourage a mix of housing options—both product types and unit sizes—within larger neighborhoods and multi-family developments.

POLICY 1.3.3: NEIGHBORHOOD SERVICES

Encourage the integration of grocery stores, restaurants, medical offices, and other daily-needs services as part of or adjacent to new neighborhoods to minimize the need for longer-vehicle trips. Require direct connections that allow residents to access services on foot or by bike.

POLICY 1.3.4: INTER-CONNECTED NEIGHBORHOODS

Seek opportunities to connect new and existing neighborhoods with sidewalks and trails where “stubs” exist or where new connections would improve access to existing or planned amenities and services. Avoid “walling off” neighborhoods except in locations where noise or other characteristics of adjacent uses impact neighborhood livability.

POLICY 1.3.5: NEIGHBORHOOD LIVABILITY

Encourage the integration and connection of parks, trails, community gardens, common open space, recreational amenities, or other features in new neighborhoods to enhance the health and quality of life of residents.

Goal 1.4: Invest in and care for established neighborhoods⁸

POLICY 1.4.1: NEIGHBORHOOD IMPROVEMENTS

Support efforts to make neighborhood improvements (e.g., trail connections, complete street improvements), enhance neighborhood quality and pride, and reduce crime.

POLICY 1.4.2: EXISTING HOUSING STOCK

Support the retention of existing housing stock in unincorporated Clark County. Encourage ongoing maintenance and promote reinvestment and improvements in declining areas and targeted redevelopment of blighted properties. Work with property owners, neighborhoods, and non-profit

⁷ New. Neighborhood-related goals and policies are included based on stakeholder interview and survey results.

⁸ Expanded from the Housing Element references to reinvestment and rehabilitation; also addresses concerns expressed in surveys and interviews.

organizations as appropriate to bring substandard units into compliance with adopted codes and improve overall housing conditions and prolong the lifespan and habitability of older homes.

POLICY 1.4.3: CODE ENFORCEMENT

Continue to respond to potential violations of Clark County Codes in an efficient and effective manner. Assist in resolving citizen complaints related to zoning violations, short-term rentals, solid waste, sign enforcement, graffiti, and other neighborhood concerns through education, service, and enforcement.

POLICY 1.4.4: INFILL AND REDEVELOPMENT

Encourage infill development and redevelopment in established neighborhoods that is compatible with the scale and intensity of the surrounding area. Establish more detailed guidance in conjunction with periodic updates to Planning Area Land Use Plans and Area-Specific Policies. *[See also, Policy 1.1.3]*

POLICY 1.4.5: BUFFERS AND TRANSITIONS

Standardize requirements for buffers and development transitions to mitigate the impacts of higher-intensity uses proposed adjacent to an existing or planned residential neighborhood.

Goal 1.5: Maintain opportunities for rural lifestyles within the Las Vegas Valley

POLICY 1.5.1: RURAL NEIGHBORHOOD PRESERVATION AREAS⁹

Support the protection of existing Rural Neighborhood Preservation (RNP) areas as defined by NRS 278.160.

[Sidebar/textbox – RNP definition and characteristics per NRS]

POLICY 1.5.2: COMPATIBLE DEVELOPMENT¹⁰

Adopt and implement standards to protect the established character and lifestyles associated with Rural Neighborhood Preservation areas and minimize future conflicts with higher intensity development planned in surrounding areas, or infill development within a RNP. Incorporate a range of possible approaches, such as transitioning densities with larger lots, , clustering higher intensity housing units away from the shared edge of the RNP, requiring similar building heights and orientations, or a combination of these and other appropriate strategies.

[IMAGES of some of the RNP areas]

POLICY 1.5.3: RURAL USES AND ACTIVITIES

Continue to support activities and uses related to the raising and keeping of animals for personal enjoyment or food production in RNP areas in accordance with Title 30.

⁹Updates to the land use categories are proposed to distinguish rural neighborhoods (as defined by NRS) from other large lot residential areas.

¹⁰ Additional specificity to be provided as part of land use category definitions to illustrate a range of compatibility approaches that could be mixed and matched depending on the situation.

Goal 1.6: Protect the character, identity, and economic viability of the County's outlying communities¹¹

POLICY 1.6.1: AREA-SPECIFIC POLICIES

Review all proposed projects in outlying communities through the lens of the area-specific policies contained in this Master Plan.¹² Support efforts by outlying communities to protect and enhance their unique histories, economic drivers, agriculture or ranching heritage, recreational, eco-tourism potential, or other character-defining features.

POLICY 1.6.2: LAND USE PLANNING

Address the unique land use considerations for outlying communities in Clark County through periodic updates to planning area land use plans and the application of tailored development regulations.

POLICY 1.6.3: ECONOMIC OPPORTUNITY

Support opportunities for local economic development in outlying communities.

Goal 1.7: Protect Clark County's historic, cultural, and archaeological resources¹³

POLICY 1.7.1: RESOURCE IDENTIFICATION AND PROTECTION

Cooperate with local preservation non-profits, the State Historic Preservation Office, the National Park Service, and others to further efforts at identifying and protecting sites within the County that have historic, cultural, or archaeological significance.

POLICY 1.7.2: EDUCATION

Broaden the public's awareness and understanding of the economic, social, and environmental benefits of preserving historic, cultural, and archaeological resources in the County.

[SIDEBAR/TEXTBOX: Lists of historic properties in Clark County at the local, national, and state levels, and a list of Historical Markers sites in Clark County from 2019 Historic Preservation Element]

POLICY 1.7.3: DOCUMENTATION AND INTERPRETATION

Encourage efforts at the community, state, or federal level to expand documentation of historic, cultural, and archaeological resources in Clark County.

POLICY 1.7.4: HISTORIC RESOURCES

Encourage the preservation and/or adaptive reuse of existing buildings, structures, or sites determined to be eligible for the State or National Register of Historic Places.

¹¹ Goal and supporting policies new. Added to reflect input received from TABs/CACs.

¹² Area-specific policies are forthcoming. Meetings on this topic tentatively planned for February 2021.

¹³ These policies adapted from the County's 2019 Historic Preservation Element. Goal expanded to include cultural and archaeological resources.

POLICY 1.7.5: HISTORIC DESIGNATION

Support the expansion of the County’s list of Historic Designations, as well as the addition of buildings, structures, or sites to the State and National Register of Historic Places.

[IMAGES of designated landmarks, such as Liberace’s Mansion, Las Vegas sign, La Concha lobby/Neon Museum, petroglyphs, Paradise Palms]

How do we get there?

County's role

The County plays an important role in helping to achieve community and neighborhood goals. Through the consistent application of the Master Plan, Area Plans, and supporting land use regulations, the County can ensure zoning districts reinforce desired uses and intensities, and use tailored standards, where applicable, to reinforce desired neighborhood character. In addition, Community Resources Management (CRM), a division of Clark County Department of Social Service, supports the County organization and the larger community through the administration of federal, state, and local grants that support the construction and rehabilitation of affordable housing developments and other community projects.

Related efforts/initiatives

There are several County initiatives underway that support these goals, along with the efforts of partners. Current efforts include:

- Rewrite of the Development Code in progress, to be aligned with the updated Master Plan
- Specific Planning Area land use plans
- Clark County *Sustainability and Climate Action Plan*
- Stadium District Master Plan
- Regional Transportation Commission (RTC) and *Southern Nevada Strong* (SNS) Future Housing Forecast
- Southern Nevada Regional Housing Authority Annual Plan



CORE VALUE #2

**Equitable Access to
Programs, Services,
and Amenities**

Core Value #2: Equitable Access to Programs, Services, and Amenities¹⁴

Where are we today?

The County offers many services, programs, and amenities that contribute to the high quality of life that residents enjoy. There are great libraries, excellent parks, recreational and enrichment programs, clean and safe streets, and support services for vulnerable populations. However, many of these services are not available in the areas where they are needed most. At over 8,000 square miles—roughly the same size as New Jersey—the County is vast, and bridging the distances can be a struggle for residents whose incomes and transportation options are limited. In addition, new neighborhoods in unincorporated Clark County, in most cases, are built without the types of basic amenities and services that residents desire—such as parks and common open spaces. This practice has emphasized inequalities by geography and income level that will be amplified by the effects of extreme heat and other effects of climate change.

While there are numerous existing amenities that residents enjoy, many agree on one that is lacking: a local arts and culture scene. Casinos routinely bring national acts and blockbuster exhibitions to the area, but residents would like to see a stronger focus on local, small-scale community spaces to create and share art, music, theatre, and other creative pursuits of their own.

In 2050, Clark County is a place where...

- Every neighborhood and community in Clark County has access to high-quality amenities including libraries, recreational and senior centers, swimming pools, parks, trails, and open spaces
- Every resident can access the health and human services they need, without regard to income, age, or ability, and in close proximity to their home
- A vibrant local arts, culture, and entertainment scene thrives alongside the national acts and venues the Las Vegas Valley is known for

¹⁴ Expanded to include programs, to better reflect full range of programs and services currently provided by County.

Countywide Goals and Policies

Goal 2.1: Continue to expand the County's parks, trails, and open space system at a level that is sustainable¹⁵

POLICY 2.1.1: LEVELS OF SERVICE

Continue to plan for a mix of urban and rural area parks, trails, and open spaces at a scale and scope that matches the County's capacity to sustain a high level of service over the long-term. Work to achieve optimal levels of service by type and location, as defined in the Growth Framework.

POLICY 2.1.2: EQUITABLE ACCESS¹⁶

Consider health benefits, impacts, and service population needs in the design, location, and prioritization of new facilities or improvements to existing facilities. Prioritize system investment in areas or communities that are currently underserved, where barriers to access exist, or where existing facilities are not projected to meet future needs.¹⁷

POLICY 2.1.3: TRAIL SITING¹⁸

Minimize recreational trail operation and maintenance costs through the efficient siting, design, and construction. Prioritize trails and trailheads in locations that:

- Connect or provide access to existing parks, trails, and recreational facilities;
- Are located within public rights-of-way/public lands, along natural washes, flood control facilities, and public utility corridors;
- Improve connectivity to trails in adjacent municipalities; and
- Encourage multiple uses and provide access to public lands where appropriate.

[MAP of existing trail network, with current projects/gaps highlighted. This map referenced in Open Space Element]

POLICY 2.1.4: ACCESS AND USES¹⁹

Designate areas where non-motorized users can experience and enjoy access to open lands, and promote responsible use of off-highway vehicles (OHVs). *[See also, Goal 3.5 and supporting policies.]*

¹⁵ Unless otherwise noted, this section builds from the draft 2020 Recreation and Open Space Element prepared by staff. Supporting data and information related to parks, trails, and open space (e.g., maps, current inventories, types/definitions, future needs, funding mechanisms) will be incorporated as part of the Growth Framework.

¹⁶ Expanded from existing.

¹⁷ Regional Bicycle & Pedestrian Plan for Southern Nevada includes an assessment of gaps within the Las Vegas Valley.

¹⁸ Consolidates a number of related policies.

¹⁹ Existing. From draft 2020 Federal Lands Element. This topic is also addressed more generally under Goal 3.5.

POLICY 2.1.5: DEVELOPMENT STANDARDS²⁰

Establish clear expectations for the provision of recreational amenities in new development to include parks, active and passive open space, and connections to adjoining properties, public lands, trail systems, and park facilities.

POLICY 2.1.6: SUSTAINABLE PARK DESIGN

Incorporate sustainable concepts such as water conservation and energy efficient lighting in new parks, as well as for park retrofits and additions.

POLICY 2.1.7: REGIONAL AND STATE SYSTEM

Continue to work with adjacent cities, federal agencies, and other state and regional partners on the implementation of collaborative projects and plans that support the enhancement of the open space and trail system throughout Clark County.

[TEXTBOX and images highlighting major regional initiatives, such as Neon to Nature and the Rim Trail]

Goal 2.2: All residents in Clark County have access to high-quality programs and amenities²¹

POLICY 2.2.1: PROGRAMMING

Continue to provide a range of recreational, educational, enrichment, and special interest programs to meet the diverse interests, ages, and needs of residents throughout Clark County.

POLICY 2.2.2: LONG-TERM MAINTENANCE

Establish thresholds for adequate on-going maintenance of existing facilities, and ensure the availability of adequate funding for the long-term upkeep of the facilities. Implement regular monitoring to ascertain that levels of maintenance are adequate to level of use and demand for facilities.

POLICY 2.2.3: FACILITY EXPANSION/NEW FACILITIES

Plan proactively for expansion of existing facilities and provision of new ones to meet increases in demand and accommodate anticipated population growth.

POLICY 2.2.4: MULTI-PURPOSE FACILITIES²²

Seek opportunities to develop and maintain multi-purpose and/or shared-use facilities (e.g., school recreational facilities, parks, community meeting space, libraries, and museums) in order to efficiently locate community and recreational facilities and programs and leverage available funding.

²⁰ Updated to emphasize input received.

²¹ New goal and policies added to address the many programs and facilities that Clark County provides and operates in addition to parks, open space, and trails. This section draws from information provided in the 2020 Community Resources Management Program Guide.

²² Carried forward and expanded from current Schools and Open Space Element policies.

Goal 2.3: All Clark County residents have access to the high-quality health and social services they need

POLICY 2.3.1: PROGRAMMING

Continue to support public health education and information dissemination initiatives that contribute to the health, quality of life, and well-being of all residents of Clark County.

POLICY 2.3.2 COMMUNITY HEALTH NEEDS ASSESSMENT²³

Support on-going efforts of the Southern Nevada Health District (SNHD) to address the prioritized list of needs identified in the Clark County *Community Health Needs Assessment* which include access to care, motor vehicle and pedestrian safety, violence prevention, substance use, and mental health.

POLICY 2.3.3 SERVICES FOR VULNERABLE POPULATIONS

Work with partner agencies that focus on homelessness prevention and assistance, and other entities that assist seniors, disabled, or other at-risk populations to ensure efficient provision of services and seamless networks of support.

POLICY 2.3.4: INFORMATION SHARING²⁴

Collaborate with internal and external County service providers on planning, information sharing, and service delivery. Ensure efficient referrals and interactions with the public seeking services by ensuring each department has a current and complete awareness of other departments' programs and services.

[SIDEBAR/TEXT BOX - brief explanation of County Departments and regional partners engaged in human service provision]

POLICY 2.3.5: FUNDING SOURCES

Continue with the identification of adequate, stable funding sources that allow service providers to meet the present level of demand for service among at-risk, homeless, and other vulnerable populations. Anticipate or respond to increases in the demand for services by identifying the means and funding to meet increased need to the maximum extent possible.

POLICY 2.3.6: ACCESS TO SERVICES²⁵

Coordinate with RTC and other regional partners on siting of future health and human service facilities to promote a more uniform distribution of specialized services in unincorporated Clark County and encourage compact land use patterns and a mix of uses in locations that have or are planned for high frequency transit. *[See also: Core Value #4 – A More Connected Clark County]*

²³ New. Included to support areas of focus identified in the Southern Nevada Health District's *Community Health Needs Assessment*, which cites "local health departments" among agencies that can contribute to addressing identified needs.

²⁴ References [directory](#) maintained by Clark County Social Service and Senior Services.

²⁵ New. Included to support recommendations contained in Southern Nevada Coordinated Transportation Plan.

Goal 2.4: Continue to foster a supportive environment for local arts, culture, and entertainment²⁶

POLICY 2.4.1: LOCAL ARTS & CULTURE²⁷

Continue to provide opportunities to use public facilities, such as parks, the Clark County Government Center Amphitheatre, community centers, senior centers, libraries, and museums as spaces to create and showcase local contributions to arts, music, and culture.

POLICY 2.4.2: COMMUNITY ENGAGEMENT

Encourage community support for and participation in opportunities to display and perform locally-created exhibits and productions.

POLICY 2.4.3: PUBLIC ART²⁸

Continue to support the County's Art fund, and the work of the Clark County Art Committee in publicizing calls for public art proposals and on-going installation of exhibits. Seek opportunities to incorporate art into public projects and encourage inclusion of artistic features in private developments as well.

[IMAGES of public art projects implemented through this program]

POLICY 2.4.4: NATIONAL ARTS & ENTERTAINMENT

Support continued efforts by casinos to bring national entertainment and cultural events to destinations and venues throughout Clark County.

²⁶ Goal updated to better reflect the County's robust programs and support for the arts.

²⁷ New. This policy and the ensuing one respond to resident input emphasizing the need for and priority of local art creation.

²⁸ This policy is derived from information on the Arts Commission and the County's annual Art Plans.

How do we get there?

County's role

The County plays a central role in planning for and providing a wide array of cultural and recreational amenities, as well as services to support members of the community. Various County departments oversee efforts to maintain and expand parks, open space, and trails, as well as providing an array of cultural and artistic programs. Numerous other County departments provide services to seniors, veterans, homeless persons, and low-income residents. The County can augment its own efforts at creating an integrated network of facilities and providing expanded access to services and amenities through collaborative planning with independent government agencies such as the Las Vegas Clark County Library Board of Trustees, neighboring municipalities, state and federal agencies, and local/private partners. Through collaboration with the cities and service providers, the County can also help to connect residents to available resources and services they need.

Related efforts/initiatives

The following plans and initiatives can help in targeting service provision:

- Clark County *Community Health Needs Assessment*
- Southern Nevada Coordinated Transportation Plan
- *Southern Nevada Strong* Regional Plan
- Las Vegas-Clark County Library District Facilities Master Plan and annual Strategic Plans
- Regional Open Space Plan
- Regional Bicycle & Pedestrian Plan for Southern Nevada
- Nevada Comprehensive Outdoor Recreation Plan
- City park, recreation, and trails plans



CORE VALUE #3

**A Healthy and
Sustainable Natural
and Built Environment**

Core Value #3: A Healthy and Sustainable Natural and Built Environment²⁹

Where are we today?

Clark County boasts some of the most unique geography anywhere in the world, and residents are well aware of their good fortune in this respect. From the heights of Mount Charleston and Red Rock Canyon to the depths of the Colorado River, from the modest confines of the Ethel M Botanical Cactus Garden to the vast expanse of Lake Mead, residents cite the ready access to parks, public lands and outdoor recreation areas as one of the strongest “positives” of living in the County. While enjoying the natural assets of the County, residents are also keenly aware of the importance of being respectful stewards of the environment.

Managing resource use is one frequently cited concern allied closely with the need to preserve existing open spaces from encroachment. Residents have witnessed recent growth that brings development to the very perimeter of open spaces, and while regional growth is forecasted to continue at a slower pace, they are conscious of the need to act now to balance future expansion with conservation. The desired outcomes include growth centered in existing urban areas; compact, mixed use communities that allow a reduction in carbon footprints; and an increased emphasis on sustainable development practices.

There is also concern over how climate change is—and will increasingly—affect County communities and vulnerable residents. The extent of change remains unclear, but there is agreement that present actions can mitigate future impacts. Residents want to undertake measures to ensure the continued viability of natural resources and the environment so that ensuing generations can benefit from the same assets we enjoy today.

As the supply of vacant land within the Valley diminishes, collaboration with the federal partners who manage much of the land within County borders becomes ever more important.

In 2050, Clark County is a place where...

- Deliberate steps taken in the past have made Clark County more resilient to the effects of extreme heat, drought, and other effects of climate change
- The built environment has been constructed or retrofitted to diminish intensity of resource use, reduce the production of greenhouse gases, and increase its resilience at withstanding changing climate conditions
- Through continued efforts and deliberate focus on compact, sustainable development and low-impact lifestyles, we are able to pass on to the next generation a healthy natural environment

²⁹ Expanded to include built environment in response to input received.

Countywide Goals and Policies

Goal 3.1: Maintain air quality at a level that protects public health and improves visual clarity³⁰

POLICY 3.1.1: PRIORITY AIR POLLUTANTS

Monitor air quality conditions and pursue a variety of strategies to reduce priority air pollutants and associated health impacts as identified by the County's *Sustainability and Climate Action Plan*.³¹

POLICY 3.1.2: TRANSPORTATION-RELATED EMISSIONS³²

Pursue a variety of strategies to reduce reliance on private automobile travel, with the goal of reducing fuel consumption and associated pollutant emissions from vehicles, including efforts to encourage higher-density and transit-oriented development in urban areas of the Las Vegas Valley. [See also: Goal 4.1 and related policies]

Goal 3.2: Support County and state efforts to expand the use of clean energy and achieve GHG reduction targets

POLICY 3.2.1: CLEAN ENERGY³³

Promote the use of alternate and renewable sources of energy in new development and pursue a variety of strategies to reduce energy consumption in existing development. [See also, Goal 3.6 and supporting policies.]

POLICY 3.2.2: FACILITY SITING³⁴

Support the expansion of renewable/alternative energy to serve Southern Nevada by allowing for the construction and expansion of clean power generating and distribution facilities at a variety of scales.

POLICY 3.2.3 ENERGY CONSUMPTION

Implement measures for the reduction of energy consumption and promotion of energy conservation in Clark County operations, as identified in the County's *Sustainability and Climate Action Plan*.

Goal 3.3: Manage water resources in a manner that protects quality, supply, and reliability³⁵

³⁰Goal and supporting policies carried forward with minor adaptations from Air Quality section of 2017 Conservation Element.

³¹ The County's *Sustainability and Climate Action Plan* is currently under development and is anticipated for completion in spring 2021.

³²Generalized from current policies; forthcoming *Sustainability and Climate Action Plan* will determine specifics.

³³Policy 3.2.1 and 3.2.2 adapted from information contained in the Resource Use and Development content and policies in the 2020 Draft Federal Lands Element.

³⁴ Carries forward and expands goal in the Resource Use and Development section of the draft Federal Lands Element.

³⁵ Adjusted wording to reflect input/questions on considerations re: supply.

POLICY 3.3.1: WATER RESOURCES PLAN³⁶

Continue to support Southern Nevada Water Authority (SNWA) efforts and plans to meet current and projected water demands, promote water conservation, and protect water quality.

Southern Nevada Water Authority

In 1991, seven local water and wastewater agencies joined together to form the SNWA in an effort to address water issues regionally rather than on an individual basis. The Authority, which includes Clark County Water Reclamation as a member agency, works to acquire and manage long-term water resources for Southern Nevada with a strong concurrent emphasis on conservation and sustainable water use. The Authority's *Water Resources Plan*, updated annually, looks at Southern Nevada's projected water demands compared against the available resources to meet those demands over a long-term planning horizon (25-50 years). The 2019 installment of the *Water Resources Plan* projects sufficient water resources to meet water demand owing in part to significant efforts and successes in conservation throughout the region.

POLICY 3.3.2: WATER CONSERVATION

Coordinate with partner agencies on educational, programmatic, and regulatory strategies to increase water conservation projects and programs throughout Clark County.

POLICY 3.3.3: WASH PROTECTION AND RESTORATION PROGRAMS³⁷

Encourage preservation and protection of washes and waterways through measures that can improve the quality of water that enters Lake Mead to include the development of wetlands, riparian, and upland habitats in the Las Vegas Wash, and the use of erosion control structures in area washes to promote wetland growth and limit further erosion within wash channels. Utilize the *Las Vegas Wash Comprehensive Adaptive Management Plan* to ensure land use compatibility with the Clark County Wetlands Park and associated wash improvements.

[MAP of important County washes – map page 45 of Conservation Element]

POLICY 3.3.4: IMPAIRED WATER BODIES

Support partner agency efforts to restore water quality to levels that allow impaired lakes, streams, and washes to be removed from the State of Nevada's List of Impaired Rivers.

³⁶ Carried forward from goal in 2017 Conservation Element to reflect supply and demand considerations.

³⁷ Combines policies from the Water Resources section of the Conservation Element.

POLICY 3.3.5: STORMWATER MANAGEMENT³⁸

Focus on maintaining quality of groundwater and public water bodies (lakes, rivers) with efforts to reduce untreated stormwater runoff through expanded use of catchment techniques, vegetative buffers, and regular maintenance of stormwater infrastructure.

POLICY 3.3.6: AGRICULTURAL ACTIVITY³⁹

Encourage the use of vegetative or constructive buffering surrounding area landscapes and farmland to limit the amount of wind erosion and irrigation runoff.

POLICY 3.3.7: GROUNDWATER RESOURCES⁴⁰

Support SNWA's initiatives to divert potentially overtaxing, harmful, or inappropriate development away from areas reaching water availability limits or with high groundwater recharge potential and to expand return flows to the Colorado River.

[MAP of high recharge areas, wellheads?]

POLICY 3.3.8: SEWER AVAILABILITY⁴¹

Limit the density of development in areas that do not or are not planned to have access to public wastewater facilities. Require residential development to connect to public sewer systems where these are available, and put in place a plan to assist with conversion from individual septic where sewer service has expanded or will expand.

Goal 3.4: Reduce quantities of landfilled waste, potentially extending the operational life of current landfill sites within Clark County⁴²

POLICY 3.4.1: RECYCLING

Work with service providers to expand recycling rates within the Las Vegas Valley through wider implementation of curbside recycling programs, to include commercial and multi-family development, and other strategies as appropriate.

POLICY 3.4.2: WASTE DIVERSION⁴³

Encourage adaptive reuse of existing buildings, the incorporation of recycled building materials, and other strategies to divert construction debris from landfills, subject to NRS and Southern Nevada Health District requirements.

³⁸ This policy combines two more general but related policies in the Water Resources section of the Conservation Element.

³⁹ Carried forward from Agriculture goals and policies in Conservation Element.

⁴⁰ Adapted from current policies in the Water Resources section of the Conservation Element.

⁴¹ Combines two policies from the Water Resources section of the Conservation Element.

⁴² This goal and policies 3.4.1 and 3.4.2 expand on goals and policies in the Solid Waste section of the Conservation Element. To be refined based on direction from forthcoming Clark County *Sustainability and Climate Action Plan*.

⁴³ Expanded somewhat from Conservation Element in response to survey responses and stakeholder input.

[IMAGES of any completed/notable reuse projects? La Concha lobby/Neon Museum]

Goal 3.5: Manage access to public lands to balance habitat, recreational, environmental, aesthetic, and economic value⁴⁴

POLICY 3.5.1: APPROPRIATE USES⁴⁵

Promote multiple uses on open lands unless activities could pose a detriment to natural resources and habitats, or long-term health of the land.

POLICY 3.5.2: STATE AND FEDERAL LAWS⁴⁶

Continue to maintain compliance with state and federal regulations, such as the Endangered Species Act, Clean Water mandates, Nevada laws regarding critically endangered plant species, and all other applicable laws and regulations, when non-federal development activity occurs.

POLICY 3.5.3: DESERT CONSERVATION PROGRAM⁴⁷

Continue administration of the Desert Conservation Program and the Multiple Species Habitat Conservation Program (MSHCP) to ensure a balance between development and species conservation.

[TEXT BOX – brief overview of Desert Conservation Program with images of protected species like desert tortoise and Mt Charleston blue butterfly]

POLICY 3.5.4: INVASIVE SPECIES⁴⁸

Actively plan for the prevention, eradication, and management of noxious weeds and invasive species in natural areas.

[LIST/IMAGES of most prevalent invasive weeds, species (Africanized honeybees, Asian Clam, Quagga Mussels). There is a comprehensive list in the 2018 Hazard Mitigation Plan.]

⁴⁴ Consolidated Goal 3.5 and 3.6 from Plan Framework. Supporting policies carry forward select goals/policies from 2017 Conservation Element and draft 2020 Federal Lands Element as noted.

⁴⁵ This policy combines a goal and policy from the Land Use section of the draft 2020 Federal Lands element. OHVs addressed more directly under Core Value #3.

⁴⁶ This policy combines Goals 1 and 2 from the Vegetation and Wildlife Resources section of the Conservation Element.

⁴⁷ Minor edits to existing policy in the Vegetation and Wildlife Resources section of the Conservation Element.

⁴⁸ Combination of related goal and policy in the Vegetation and Wildlife Resources section of the Conservation Element.

Goal 3.6: Focus on incorporating enhanced sustainability and resilience practices into the built environment⁴⁹

POLICY 3.6.1: URBAN HEAT ISLAND EFFECT⁵⁰

Encourage the use of site and building features, such as shade trees and reflective materials, to reduce heat absorption by exterior surfaces, provide shade, or otherwise mitigate the urban heat island effect.

POLICY 3.6.2: COMPACT, MIXED-USE, AND TRANSIT-ORIENTED DEVELOPMENT

Promote compact, mixed-use, and transit-oriented development, or any combination thereof, in locations that will lessen reliance on automobiles as the primary means of access to necessary services and encourage reduction in vehicle miles traveled. *[See also: Goal 4.1 and related policies]*

POLICY 3.6.3: GREEN BUILDING⁵¹

Encourage development that incorporates design elements that lower energy consumption through inclusion of passive heating and cooling principles, superior insulation, energy efficient windows, use of environmentally- certified materials, and other green building techniques.

POLICY 3.6.4: GREEN NEIGHBORHOOD DESIGN

Promote development that incorporates neighborhood-scale green building practices.

POLICY 3.6.5: WATER RECYCLING⁵²

Encourage the reuse of treated effluent for area green space including, but not limited to, parks and golf courses.

POLICY 3.6.6: DROUGHT-TOLERANT LANDSCAPING⁵³

Using the Southern Nevada Regional Planning Coalition’s Plant List as a guide for appropriate plant choices, encourage the use of drought-tolerant, desert-appropriate landscaping and the use of and irrigation systems that are designed for maximum water use efficiency.

POLICY 3.6.7: MULTI-MODAL TRANSPORTATION

Prioritize efforts to reduce transportation-related carbon emissions through expanded multi-modal transportation options. *[See also: Goal 4.1 and related policies]*

⁴⁹This goal and the supporting policies are generally new. They are included based on feedback that “built environment” should be included in CV3, expanding it from “A Healthy and Sustainable Natural Environment” to “A Healthy and Sustainable Natural and Built Environment.”

⁵⁰ Implementation strategy will be included that reflects County’s participation in and recommendations that emerge from the Extreme Heat Vulnerability Study for the region that its being led by RTC.

⁵¹ Policies 3.6.3 and 3.6.4 are placeholders for further discussion.

⁵²Existing.

⁵³ Adapted from a goal and policy in the Vegetation and Wildlife Resources section, and one policy in the Water Resources section, of the Conservation Element.

POLICY 3.6.8: GREEN INFRASTRUCTURE⁵⁴

Encourage the inclusion of green infrastructure such as rain gardens, permeable pavers, infiltration planters, and rainwater harvesting systems to larger scale infrastructure investments including pervious pavement with infiltration, vegetated swales, green roofs, bioretention, and grey water recycling systems.

How do we get there?

County's role

The County's Department of Environment and Sustainability plays a direct role overseeing air quality, climate action, and sustainability efforts. County partnerships can support water conservation, and conservation and land management through collaboration with state and federal agencies, the Southern Nevada Water Authority, and the Conservation District. Clark County has further demonstrated its commitment to climate action by joining nearly 200 other counties throughout the U.S. in the County Climate Coalition, a group dedicated to cutting emissions and fighting climate change in accord with the U.N.'s 2015 Paris Climate Agreement.

Related efforts/initiatives

There are three County initiatives underway, along with other partner efforts in this area:

- Clark County *Sustainability and Climate Action Plan*
- County Climate Coalition
- Clark County 208 Water Management Plan
- Conservation District of Southern Nevada Resource Needs Assessment
- Southern Nevada Water Authority Joint Water Conservation Plan

⁵⁴ Included as a placeholder since it came up frequently in comments. List to be refined to reflect suitability and viability for Southern Nevada.



CORE VALUE #4

**A More Connected
Clark County**

Core Value #4: A More Connected Clark County

Where are we today?

Connectivity in this context refers to both the physical aspects—as they relate to transportation and mobility—and the less tangible aspects—as they relate to governance and community.

From a physical standpoint, many residents struggle to get where they need to go in Clark County without an automobile. Residents have appreciated seeing new infrastructure with shared space, allowing cars to travel alongside bicyclists, pedestrians, and public transportation. They would like to see this trend continue by focusing on efforts to connect existing trails, bike lanes and pedestrian facilities, along with expanding public transportation. As with many County initiatives, efforts at expanding transportation networks cross boundaries and jurisdictional lines which makes interagency collaboration in this area central to accomplishing these goals.

From a governance standpoint, connectivity refers to transparency, community engagement, and a focus on regional collaboration. Residents express the desire for County government to provide timely information, to make decisions consistent with adopted goals and policies, and to allow for meaningful opportunities for citizen participation.

Lastly, connectivity refers to residents' desire to foster a collective sense of community in Clark County. Living in Searchlight is, of course, different from living in Summerlin, but these places are connected through the people who call them home. These people are friends, neighbors, relatives, and coworkers who are connected in countless different ways. Fostering a sense of community among these diverse people and places is achieved by embracing, and working toward a common set of goals for the County as a whole.

In 2050, Clark County is a place where...

- Sidewalks, bike lanes, trails and transit form a seamless, integrated network within and to major destinations in Clark County
- County government is part of a well-established network of service providers and support agencies all collaborating to provide the best service and most efficient government possible
- Effective government serves as the basis for transparent information sharing and predictable decision-making, while allowing meaningful opportunities for community input
- People have strong connections to their communities, to shared values, and to one another

Countywide Goals and Policies⁵⁵

Goal 4.1: Promote the expansion and use of multimodal transportation options throughout Clark County⁵⁶

POLICY 4.1.1: REGIONAL HIGH CAPACITY TRANSIT SYSTEM

Support efforts to provide faster, cleaner, more frequent, and more convenient transit service to and from major destinations within the region through the phased expansion of the High Capacity Transit network. Align land use and transportation decisions in unincorporated Clark County with recommendations contained in RTC's *On Board Your Future Mobility Plan* and subsequent implementation documents.

[MAP DIAGRAM from proposed HCTS from On Board Mobility Plan]

POLICY 4.1.2: TRANSIT COVERAGE – LAS VEGAS VALLEY

Support efforts by RTC to enhance, redistribute, and/or expand service hours, coverage, and frequency to maximize access to jobs and housing, make short trips easier, better address the needs of underserved or transit-dependent populations, and connect major destinations in unincorporated Clark County with other destinations throughout the Las Vegas Valley.

POLICY 4.1.3: TRANSIT COVERAGE – OUTLYING COMMUNITIES⁵⁷

Support efforts by the Southern Nevada Transit Coalition (SNTC) to sustain and enhance Silver Rider Transit service for the rural parts of Clark County.

POLICY 4.1.4: HIGH-SPEED PASSENGER RAIL⁵⁸

Support efforts to explore the future potential for high-speed passenger rail service between Las Vegas and Southern California.

POLICY 4.1.5: BICYCLE AND PEDESTRIAN CONNECTIVITY

Support the implementation of the *Regional Bicycle and Pedestrian Plan for Southern Nevada* by:

- Planning and implementing incremental improvements to existing roadways and trails in unincorporated Clark County to improve safety and connectivity for all modes;
- Prioritizing the installation of pedestrian, equestrian, and bicycle facilities in areas of unincorporated Clark County that are currently underserved, contain—or are planned for—land

⁵⁵ Unless otherwise noted, policies in this section are new, but generally carry forward the intent of the goals and policies in the current Transportation Element.

⁵⁶ Goal updated from Plan Framework.

⁵⁷ New. Supports recommendations in 2018 NDOT Transit Coordinated Human Services Transportation Plan and RTC Coordinated Transportation Plan.

⁵⁸ Existing. Expanded to specify high-speed rail and include origin/destination.

uses or transportation facilities that generate high levels of activity, or where “gaps” between existing segments of sidewalks, trails, or bike lanes exist; and

- Adopting stronger, context-sensitive connectivity standards for future development and redevelopment.

[MAP of future regional bike/ped network from RBPP]

POLICY 4.1.6: COMPLETE STREETS

Seek opportunities to integrate Complete Streets attributes as part of County infrastructure projects to the maximum extent practicable as a means to reduce traffic congestion, improve air quality, and increase the quality of life of residents by providing safe, convenient, and comfortable routes for walking, bicycling, public transportation, and driving.

What is a Complete Street?

Complete Streets are roadways designed to accommodate all users safely and comfortably, regardless of age, ability, or mode of transportation. Users include motorists, cyclists, pedestrians, and all vehicle types, including public transportation, emergency responders, and freight and delivery trucks, among others. In addition to providing safety and access for all users, Complete Street design treatments take into account accommodations for disabled persons as required by the ADA. Design considerations for connectivity and access management are also taken into account for non-motorized users of the facility. *(Source: RTC Policy for Complete Streets)*

[IMAGE of completed/existing/planned complete streets projects in the County or GRAPHIC showing a complete street cross section]

POLICY 4.1.7: SAFE ROUTES TO SCHOOL⁵⁹

In coordination with Clark County School District, support Safe Routes to Schools programs as a way to reduce vehicular congestion in school zones and create safe and inviting environments for students, families, and staff to walk, bicycle, and use public transportation to travel to and from school.

⁵⁹Existing (expanded).

Goal 4.2: Actively manage the transportation system to improve reliability, efficiency, and safety⁶⁰

POLICY 4.2.1: FREEWAYS⁶¹

Collaborate with the Nevada Department of Transportation, RTC, and other regional partners on efforts to implement projects and programs that result in a more efficient freeway system, and support reductions in travel demand, air pollution, energy consumption, and infrastructure needs.

POLICY 4.2.2: ROADWAY DESIGN AND CLASSIFICATION⁶²

Ensure the identified functional class, right-of-way, design, capacity, and level of service of transportation facilities are consistent in supporting existing and future land use development patterns.

POLICY 4.2.3: RIGHT-OF-WAY PRESERVATION⁶³

Support the identification and retention of rights-of-way for future roadways, fixed guideway systems, or other transportation facilities identified in adopted plans. Discourage the vacation of existing or planned rights-of-way unless alternative multimodal connections exist or can be provided in the vicinity.

POLICY 4.2.4: ACCESS MANAGEMENT⁶⁴

Limit driveway frequencies on arterial and collector streets in accordance with the *Clark County Area Access Management Plan*.

POLICY 4.2.5: TRAFFIC CALMING⁶⁵

Encourage the use of context-sensitive traffic calming measures in appropriate locations to reduce vehicle speeds, discourage shortcutting traffic, increase safety, and enhance the livability of neighborhoods and communities.

POLICY 4.2.6: FREIGHT NETWORK

Support efforts to enhance connectivity between truck, rail, and air transport to support the efficient movement of goods in and through Clark County. Support development that is compatible with freight operations to protect existing uses and maintain opportunities for future expansion of employment

⁶⁰New goal added to capture the more roadway- and system-oriented goals and policies in the current Transportation Element. Some of the existing policies are very specific and may fit better as implementation strategies.

⁶¹New to replace very specific goal and policy re: I-11 and Project Neon that will be relocated to implementation strategies.

⁶²Existing. Descriptions of classifications and accompanying maps to be carried forward as part of Growth and Development Framework.

⁶³ Existing. Combined and updated for clarity.

⁶⁴ Existing. Updated to reference access management plan.

⁶⁵Existing. Combined and updated for clarity.

and industrial land uses in areas with desirable freight access. *[See also: goals and policies under Core Value #5.]*

Goal 4.3: Support regional and interagency collaboration⁶⁶

POLICY 4.3.1: REGIONAL PLANNING

Continue participation in regional planning efforts, working alongside partner agencies to pursue shared goals related to growth management, infrastructure, affordable housing, economic development, social service provision, transportation, resource conservation, sustainability, and other issues of mutual importance within the Las Vegas Valley.

POLICY 4.3.2: SERVICE PROVIDERS

Continually seek opportunities to gain efficiency and efficacy in the delivery of County services, working with partner organizations and service providers to understand core strengths, capacities, and initiatives, better plan for coordinated service provision, and avoid the duplication of efforts.

POLICY 4.3.3: INTERAGENCY COORDINATION

Work with regional, state, and federal agencies to develop coordinated plans and regulations, prioritize inter-jurisdictional infrastructure improvements, develop coalitions to finance and implement needed improvements, and address other issues of mutual importance.

POLICY 4.3.4: LOCAL PLANS AND POLICIES

Actively participate in planning efforts led by the incorporated cities to promote consistency with Clark County policies and regulations, and identify opportunities for partnerships.

POLICY 4.3.5: INFORMATION SHARING

Facilitate improved interagency communication, promote the exchange of information, and encourage resource sharing between Clark County and its regional, state, and federal agency partners.

POLICY 4.3.6: FEDERAL LAND MANAGEMENT⁶⁷

Strive for consistency between Clark County's Master Plan and Development Code and federal land management plans through on-going coordination with federal land management agencies.

Goal 4.4: Foster a culture of transparent and inclusive County government⁶⁸

⁶⁶ Expanded from Plan Framework to add interagency. Topics under this goal and supporting policies are addressed more specifically in other sections. This section is intended to reinforce the importance of collaboration more generally.

⁶⁷ Carried forward and expanded from goal in Land Use Policy section of Federal Lands Element.

⁶⁸ This goal and supporting policies are new, included based on stakeholder input.

POLICY 4.4.1: MASTER PLAN IMPLEMENTATION

Incorporate the Master Plan into County capital improvement planning, departmental work programs, and decision-making at all levels to promote consistency and continuity as elected officials and staff change over time.

POLICY 4.4.2: GEOGRAPHIC REPRESENTATION

Evaluate projects, proposals, and investments in the context of both countywide and area-specific interests, as expressed through the goals and policies of this Master Plan and supporting land use plans. Strive to ensure that the benefits resulting from a particular decision are fairly shared, and that any burdens or negative impacts do not disproportionately affect a particular group or location in the County.

POLICY 4.4.3: COUNTY BOARDS AND COMMISSIONS

Strive to reflect the diversity of the County in the membership of volunteer boards and commissions, including but not limited to people of different genders, races, ethnicities, income levels, ages, backgrounds, and occupational experience.

POLICY 4.4.4: PUBLIC PARTICIPATION

Encourage fair and equitable participation in County processes and public hearings through focused efforts to engage all members of communities including typically hard to reach constituent groups.

POLICY 4.4.5: INCLUSIVE ENGAGEMENT

Seek to engage with a broad spectrum of the community during all County-led outreach efforts. This includes residents and businesses from different ages, racial backgrounds, education levels, and income levels, as well as those who face other barriers to participating in engagement activities.

POLICY 4.4.6: COMMUNICATIONS

Continue to use a range of tools, techniques, and technologies to disseminate timely information to Clark County residents and other interested parties, and encourage participation in County-sponsored events and processes.

How do we get there?

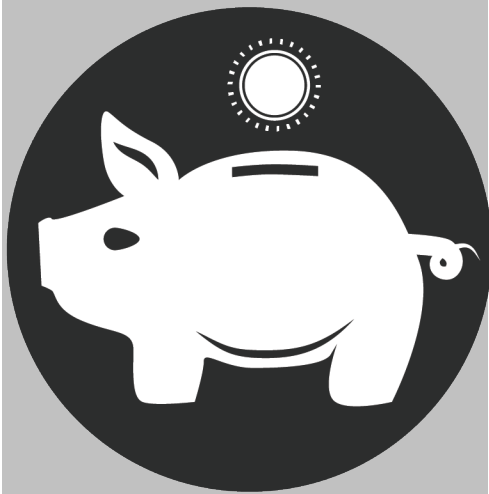
County's role

County policies can emphasize continued provision of interconnected bicycle and pedestrian facilities in unincorporated areas, and linking those to city and regional facilities. This effort will also benefit from continued collaboration with planning partners in other County departments, adjacent municipalities, and partner agencies, and the consistent application of adopted plans and regulations.

Related efforts/initiatives

Various partner efforts have recently been completed, or are in progress:

- Southern Nevada Coordinated Transportation Plan
- *On-Board Your Future Mobility Plan*
- Regional Bicycle & Pedestrian Plan for Southern Nevada
- *Southern Nevada Strong* Regional Plan
- Master Transportation Plans for cities



CORE VALUE #5

**A Diverse and Resilient
Economy**

Core Value #5: A Diverse and Resilient Economy⁶⁹

Where are we today?

Clark County is home to one of the most popular tourist destinations in the world -- the Las Vegas Strip -- with its endless variety of hotels, casinos, restaurants, shows and attractions. The County plays host to the world, but this strength in the travel and tourism industries can also be a vulnerability: a highly concentrated economic base is subject to particularly severe shocks when its main industries are affected. This was clear during the Great Recession of 2008 when the County's economic recovery lagged that of other parts of the country, and the 2020 pandemic has brought home this difficult lesson once again.

Residents hope that when the pandemic subsides, tourism and entertainment recover their central place in the economy, but they are even more acutely aware of the benefits to be gained from diversifying the region's base economic industries. Expanding the employment mix can make the area more resilient to withstand any future downturns the economy experiences.

A related concern is for the County to attract industries that provide higher base wages than service industries typically offer. Some such industries, like health care, are growing in the area, and residents recognize that efforts to attract a broader industry base relies on having a workforce with the educational background and contemporary skills to fill the jobs on offer. Another element to attracting new industries to the County involves making sure there is space for them to locate by preserving employment land, whether for commerce or industry, and fostering a business climate that makes setting a up new business easy and straightforward to accomplish.

In 2050, Clark County is a place where...

- Defined employment centers, diverse housing options for workers, supportive regulations, and a high quality of life in unincorporated Clark County have helped attract new industry, by providing space for new industries to locate
- An economy distributed across many industries is stronger and more resilient to withstand periodic downturns
- Diverse industries offer living wages for the residents who work within them

⁶⁹ Unless otherwise noted, content in this section is largely new, but builds from County's draft Economic Development Strategic Plan, and other related plans and studies.

Countywide Goals and Policies

Goal 5.1: Promote diversification of the economic base to enhance resilience

POLICY 5.1.1: COUNTY-FOCUSED ECONOMIC DEVELOPMENT STRATEGY

Adopt and maintain an economic development strategy for County-led efforts that articulates Clark County’s near- and long-term economic development priorities within the Las Vegas Valley and for the County as a whole.

POLICY 5.1.2: STATE AND REGIONAL ECONOMIC DEVELOPMENT INITIATIVES

Actively participate in state and regional economic development initiatives led by the Governor’s Office of Economic Development (GOED), the Las Vegas Global Economic Alliance (LVGEA), and others that provide support and direction on issues of mutual importance.⁷⁰

POLICY 5.1.3: ECONOMIC BASE

Continue to emphasize tourism, conventions, trade shows, and gaming as one of the region’s economic pillars, while pursuing efforts to expand the presence of new and emerging sectors such as health care, technology, green industries, manufacturing, engineering, and others identified by the GOED, LVGEA, or the *Clark County Economic Development Strategic Plan*.

POLICY 5.1.4: REGIONAL OPPORTUNITY SITES

Continue to support land use patterns, partnerships, and other efforts that help advance Regional Opportunity Sites and other major efforts, such as the Las Vegas Medical District; *Stadium District Master Plan*; and *Maryland Parkway Corridor Transit-Oriented Development Plan*.

POLICY 5.1.5: REINVESTMENT

Promote reinvestment in declining commercial and employment areas through the adaptive reuse or targeted redevelopment of blighted properties, such as vacant or underutilized shopping centers.

[MAP and brief explanation of regional Opportunity Sites identified in SNS, highlighting those located in unincorporated Clark County]

POLICY 5.1.6: OUTLYING COMMUNITIES

Collaborate with outlying communities in Clark County on the implementation of local and regional economic development goals particularly where targeted industry needs are better suited to locations within outlying communities.

⁷⁰ Near-term (1-3 year) priorities like post-COVID recovery will be addressed in the implementation strategies.

Goal 5.2: Support continued improvements to and expansion of commercial airport operations in Clark County⁷¹

POLICY 5.2.1: MCCARRAN INTERNATIONAL AIRPORT

Minimize encroachment on McCarran International Airport operations by restricting the expansion of land uses within the Airport Airspace Overlay District (AAOD) that are incompatible due to noise, safety, and other concerns, according to guidance provided by federal agencies.

[MAP diagram of airport critical zones]

POLICY 5.2.2: SOUTHERN NEVADA SUPPLEMENTAL AIRPORT

Continue to work with the Bureau of Land Management and other federal, state, and regional partners to plan for the development and conflict-free operation of the Southern Nevada Supplemental Airport. Ensure future development on and in the vicinity of the airport site does not conflict with the compatibility area, retention basins, use of the transportation utility corridor, or long-term plans for the facility and other potential aviation infrastructure.

[MAP diagram of SNSA bounds and immediate context]

POLICY 5.2.3: FUTURE AVIATION FACILITIES

Support long-term planning strategies for future aviation facilities needed to support the growing demand for alternative air transportation services, such as drones, new forms of air taxi services, or the non-urban heliport.

Goal 5.3: Support the military and the need for well-trained and prepared armed forces⁷²

POLICY 5.3.1: COMPATIBLE DEVELOPMENT

Cooperate with the U.S. Air Force to reduce or mitigate development deemed incompatible with the mission of the military on and near Nellis Air Force Base, Creech Air Force Base, and the Nevada Test and Training Range.

POLICY 5.3.2: OVER FLIGHT AREAS

Support over flights where necessary and encourage the Air Force to acquire lands in proximity to critical operation centers to ensure compatibility with existing land uses near Air Force facilities.

POLICY 5.3.3: NELLIS COMPLEX COMPATIBLE USE PLAN

Support the strategies resulting from the Nellis Complex Compatible Use Plan to promote compatible land uses around existing military installations and to support military operations.

⁷¹This goal and accompanying policies reflect input from Airport Authority staff. General sidebar/textbox discussion of the economic importance of aviation to be added.

⁷² This goal and accompanying policies carried forward from draft Federal Lands Element.

Goal 5.4: Support development of educational programs that prepare the workforce with the knowledge and skills to succeed

POLICY 5.4.1: EDUCATION

Support efforts at all levels of the education system that provide Clark County residents with the knowledge and skills needed in the modern workforce and encourage industries to hire from the local labor pool.

POLICY 5.4.2: VOCATIONAL TRAINING

Continue to work with state and regional partners to provide practical job training programs in skilled trades that enable participants to obtain stable, living-wage work in the County.

POLICY 5.4.3: SMALL BUSINESS OPPORTUNITY PROGRAM

Continue to provide information, training, and other resources to help small businesses become competitive in their efforts to pursue and complete Clark County contracts.

Goal 5.5: Foster a business-friendly environment

POLICY 5.5.1: DESIGNATED EMPLOYMENT AREAS

Designate and support the development of industrial and employment uses in areas that are proximate to major air, rail, and highway facilities. Maintain the viability of designated employment areas by preventing encroachment from potentially incompatible uses or the conversion of employment-designated parcels to alternate uses.

[MAP diagram showing land planned for employment uses – conceptualize based on employment areas designated on Planning Area Land Use Plans]

POLICY 5.5.2: TECHNOLOGY

Continue to work with state and regional partners on the expansion of infrastructure, broadband access, and other technological enhancements that support the expansion of businesses throughout Clark County.

POLICY 5.5.3: SMALL AND LOCAL BUSINESSES

Encourage the retention and revitalization of established local business districts and the expansion of small businesses in unincorporated Clark County. [See also, Goal 1.6]

POLICY 5.5.4: DOWNTOWNS AND LOCAL BUSINESS DISTRICTS

Continue to work with the Governor’s Office of Economic Development (GOED), Las Vegas Global Economic Alliance (LVGEA), and other partners to provide tools and technical assistance to enhance the economic vitality of downtowns and local business districts in the outlying communities. Encourage expanded participation in Nevada’s Main Street Communities program and other programs geared toward rural communities.

How do we get there?

County's role

County land use policies can have a direct impact on various aspects of economic development while the Office of Community and Economic Development can directly pursue efforts to attract new industries to the area. The County can also benefit from the research of partner agencies focused on economic development, and support the efforts of other jurisdictions working on economic diversification.

Related efforts/initiatives

- Clark County Economic Development Strategic Plan (in process)
- Las Vegas Convention and Visitors Authority's economic research and development initiatives
- UNLV's Lee Business School and the Center for Business and Economic Research
- Las Vegas Global Economic Alliance Southern Nevada Comprehensive Economic Development Strategy
- *Southern Nevada Strong* Regional Plan



CORE VALUE #6

**Sustainable and
Resilient Growth and
Development**

Core Value #6: Sustainable and Resilient Growth and Development⁷³

Where are we today?

Over the past decades, Clark County has grown at a very rapid pace, with residents occasionally expressing the sentiment that the only constant is change and expansion. There have been “bumps in the road,” such as the Great Recession of 2008, which had particularly severe effects in the region and resulted in an extended recovery period.

The pace of growth in recent years has led some to express concerns that the pressure to build seems to outweigh concerns about the quality, intensity, location, and type of development. As a result, there is a perception by many that the quality of development occurring in unincorporated areas is lower than that occurring in the incorporated cities. This has translated into a general desire to “raise the bar” on County development. In addition, requests for exceptions to adopted plans are frequent, and development that is approved is sometimes markedly different from that recommended by adopted plans. This has led to frustration on the part of residents and the development community that development processes lack predictability.

Leaving aside exceptional events like recessions, the regular pace of growth is forecast to slow over the coming decades. With diminishing growth pressures, there is an opportunity to consider more carefully the physical shape the County’s future should take. Slower growth can afford the opportunity to focus more on the details of our surroundings and put tools and procedures in place to guide new development. That is what a core value emphasizing predictability in growth and development is about.

In 2050, Clark County is a place where...

- Both residents and the development community share a common understanding of what kinds of development—in terms of intensity, uses, and amenities— is supported in different locations
- Adopted plans have offered the flexibility to adapt to near-term changes in the market, but have maintained consistency in implementing goals relevant to different parts of the County
- Adopted plans have guided decision-making to produce predictable outcomes
- Mitigation efforts have reduced the potential severity of natural or manmade hazard events

⁷³Wording updated to reflect input received.

Countywide Goals and Policies

Goal 6.1: A coordinated pattern of development in unincorporated Clark County⁷⁴

POLICY 6.1.1: GROWTH CAPACITY

Continue to work with regional and state agencies and service providers to ensure that the water supply, water treatment and distribution capacity, sewage treatment, school capacity, and road network is capable of serving present and future demand within the Las Vegas Valley and in outlying communities in Clark County.

POLICY 6.1.2: BALANCED MIX OF USES

Plan for a mix of residential and non-residential uses in unincorporated Clark County to support a balance of jobs and housing within the Las Vegas Valley, as well as in outlying communities. Consider development constraints when evaluating future land use plans to ensure proposed uses can be implemented without creating unintended conflicts. *[See also, Policy 5.5.1]*

POLICY 6.1.3: VARIED DENSITY AND INTENSITY

Continue to plan for a mix of urban, suburban, and rural development based on the needs of different areas and communities within unincorporated Clark County. Clearly articulate these intended distinctions through adopted land use categories and supporting regulations to increase predictability for residents, property owners, and investors about intended future land use patterns in a given location. *[See also, goals and policies under Core Value #1]*

POLICY 6.1.4: COMPACT DEVELOPMENT

Encourage compact and efficient development patterns within the disposal boundary to maximize the use of available infrastructure, land, and other resources, and support existing and future transit service while taking into account community compatibility, airport overlay zones, and other factors that may limit development intensity in some areas. *[See also, Goals 1.5, 5.1, and 5.2 and supporting policies.]*

POLICY 6.1.5: TRANSIT-ORIENTED DEVELOPMENT

Continue to plan for and support the implementation of higher-density, transit-oriented development projects along the Maryland Parkway corridor and other transit corridors within unincorporated Clark County in collaboration with RTC, the City of Las Vegas, and other partners. *[See also, Policy 5.1.4]*

[GRAPHIC of Maryland Parkway Transit Corridor]

POLICY 6.1.6: INFILL, REDEVELOPMENT, AND ADAPTIVE REUSE

Encourage infill, redevelopment, and the adaptive reuse of vacant or underutilized buildings as a means to encourage reinvestment, expand housing options, and promote sustainable development

⁷⁴ Wording modified to be more specific (and reflect adjustments to proposed Core Value language). This goal and the supporting policies are intended to address broader land use considerations that will then inform Planning Area Land Use Plans and other more specific goals and policies.

patterns. Prioritize the use of development incentives in areas where high capacity transit exists or is planned. *[See also, Policy 6.1.5.]*

POLICY 6.1.7: DISPOSAL BOUNDARY

Coordinate with the Bureau of Land Management (BLM) on any changes to the extent of the disposal boundary, acquisition of lands for local public purposes, and identifying public lands appropriate for privatization within existing disposal boundaries.

[MAP diagram of disposal boundary]

Goal 6.2: Enhance the quality of development in unincorporated Clark County

POLICY 6.2.1: CONTEXT-SENSITIVE DESIGN

Ensure the design and intensity of new development is compatible with established neighborhoods and uses in terms of its height, scale, and the overall mix of uses.

POLICY 6.2.2: SUSTAINABLE SITE DESIGN AND DEVELOPMENT PRACTICES

Encourage the use of sustainable site design and development practices in new construction projects. *[See also, Goal 3.6 and supporting policies]*

POLICY 6.2.3: NEIGHBORHOOD TRANSITIONS

Determine transition zones, between rural and more urban areas, between developed areas and sensitive open space or conservation areas, between commercial and residential areas, and create policies and regulations to support appropriate transitions in character of development and neighborhood compatibility in these areas.

POLICY 6.2.4: CONNECTIVITY⁷⁵

Consider development standards to reduce impediments to pedestrian access, such as block walls, cul-de-sacs, fencing, and other obstacles that require the unnecessary use of a vehicle to travel short distances to otherwise adjacent uses, or consider including pedestrian access in the subdivision approval process. *[See also: Goal 1.2 and supporting policies]*

Goal 6.3: Proactively plan for safer and more resilient infrastructure, development patterns, and County operations⁷⁶

POLICY 6.3.1: INTEGRATED PLANNING, DECISION-MAKING, AND RESPONSE

Continue to facilitate periodic updates to—and the implementation of—the *Clark County Multi-Jurisdiction Hazard Mitigation Plan* to promote coordinated planning, decision-making, and responses to potential natural or manmade disasters.

⁷⁵Existing.

⁷⁶ Broader wording to respond to input received and reinforce alignment with All-In Clark County. Goal and supporting policies generally reflect intent of 2017 Conservation Element, but have been restructured and expanded to strengthen linkages to the *Clark County Multi-Jurisdiction Hazard Mitigation Plan*.

POLICY 6.3.2: NATURAL HAZARDS MITIGATION

Increase awareness of the associated risks and costs, identify strategies to minimize threats for existing development in high risk areas, and promote informed decision-making when future development within high risk areas is proposed for consideration. Mitigate the potential cost and destructive impacts of natural hazard events such as floods, seismic disturbance, or subsidence by integrating hazard mitigation considerations into Planning Area Land Use Plans and supporting regulations.

[TEXTBOX: Brief explanation of hazards from 2018 Hazard Mitigation Plan: Climate Change, Dam Failure, Drought, Earthquake, Flood, Infectious Disease, Infestation, Subsidence and Fissures, Wildfire (highlights indicate most severe risks for unincorporated CC)]

POLICY 6.3.3: MANMADE HAZARDS PLANNING

Develop plans to address foreseeable manmade hazard impacts, including airport environ areas identified in land use plans, and support any necessary training or preparation for implementation of the 2020 *Hazardous Materials Plan* response.

Goal 6.4: Collaborate with service providers and adjacent jurisdictions in the provision of adequate public facilities

POLICY 6.4.1: INFRASTRUCTURE

Monitor implementation progress on current Capital Improvement Plan, and consider future capital investments in the logical expansion of County infrastructure facilities, to include water and sewer systems, roads, and other public facilities, for ensuing five-year CIP cycles.

POLICY 6.4.2: PUBLIC SAFETY⁷⁷

Base the provision of services of fire protection needs, population, land use, and funding, and support efficient response times for public safety, fire, and emergency response personnel through planned orderly development, standard addressing, and compliance with standards for emergency vehicle access.

POLICY 6.4.3: POLICE AND FIRE ACCESS

Ensure that all development provides adequate access for police, fire, and other emergency vehicles, along with sufficient equipment such as fire hydrants, through proactive participation in the development review process.

⁷⁷ Policies 6.4.2 through 6.4.6 carry forward policies from 2003 and 2008 Police Element, and the 2015 Fire policies. In some instances, policies have been consolidated or combined.

POLICY 6.4.4: RURAL FIRE SUPPRESSION⁷⁸

All development located outside the Clark County Fire Service District must provide adequate emergency medical and fire protection services, including demonstration of additional water storage for new development in rural areas of the County.

POLICY 6.4.5: INTERAGENCY RESPONSE

Continue to work with federal and state agencies to establish reciprocal agreements for emergency service provision in Wildland Interface Areas, and to develop alternative response plans and funding sources for responding to incidents on federal and state highways and lands.

POLICY 6.4.6: SHARED FACILITIES⁷⁹

Encourage the Las Vegas Metropolitan Police Department (METRO) to participate with other County Departments and Agencies in planning and developing multiple use public service facility sites, where possible, especially with other emergency service providers.

POLICY 6.4.7: SCHOOL FACILITIES⁸⁰

Work with the Clark County School District to provide school facilities through actions such as:

- Sharing information and informing the School District of development and population trends;
- Using most recent version of the Clark County Schools Map on the Clark County School District website to coordinate location and timing of future facilities;
- Considering school facilities in updating land use plans and during development review; and
- Developing school and park sites jointly wherever possible.

⁷⁸ Carried forward from 2015 Fire policy recommendations with updates for clarity and consistency. Will revisit Work Program Recommendations in that document when developing implementation strategy.

⁷⁹ Carried forward from 2008 update to Police Element.

⁸⁰ Carried forward from 2017 Public Facilities and Services Policies with minor updates for clarity.

How do we get there?

County's role

The County can plan for and guide growth in unincorporated areas of the County, and support the implementation of local, state, and federal plans and policies.

Related efforts/initiatives

In addition to the County's Master Plan and adopted comprehensive plans for the cities, there are numerous other plans and studies in place that influence growth and development in Clark County:

- *Southern Nevada Strong Regional Plan*
- *Nellis Air Force Base Compatible Use Plan*
- Federal Land Management Plans
- UNLV Master Plan
- *Las Vegas 2050 Master Plan*
- *Maryland Parkway Transit-Oriented Development Corridor Plan*